

Chem-Impex International, Inc.

Tel: (630) 766-2112

E-mail: sales@chemimpex.com

Shipping and Correspondence:

935 Dillon Drive

Wood Dale, IL 60191

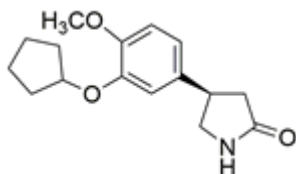
Fax: (630) 766-2218

Web site: www.chemimpex.com

Manufacturing site:

825 Dillon Drive

Wood Dale, IL 60191



Product Specifications

Catalogue Number	38235
Product	(R)-(-)-Rolipram (R)-(-)-4-[3-(Cyclopentyloxy)-4-methoxyphenyl]pyrrolidin-2-one
CAS Number	85416-75-7
Molecular Formula	C ₁₆ H ₂₁ NO ₃
Molecular Weight	275.35

Warnings	<i>Heat sensitive!</i>
Appearance	White to almost white powder to crystal
Melting Point	132 - 136 °C
Optical Rotation	[α] _D ²⁰ = -29 to -34 ° (C=0.5 in Methanol)
Chiral HPLC	≥ 98% (ee)
Other Enantiomer	≤ 2%
Purity by HPLC	≥ 98%
Storage	Store at < 0 °C

For Laboratory Use Only