

Chem-Impex International, Inc.

Tel: (630) 766-2112

E-mail: sales@chemimpex.com

Shipping and Correspondence:

935 Dillon Drive

Wood Dale, IL 60191

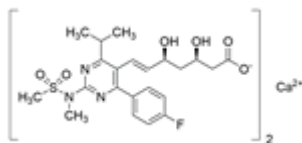
Fax: (630) 766-2218

Web site: www.chemimpex.com

Manufacturing site:

825 Dillon Drive

Wood Dale, IL 60191



Product Specifications

Catalogue Number	38233
Product	Rosuvastatin calcium (<i>E</i>)-7-[4-(4-Fluorophenyl)-6-isopropyl-2-[methyl(methylsulfonyl)]
CAS Number	147098-20-2
Molecular Formula	C ₄₄ H ₅₄ CaF ₂ N ₆ O ₁₂ S ₂
Molecular Weight	1001.14

Warnings	<i>Heat sensitive!</i>
Appearance	White to almost white powder to crystal
Melting Point	159 - 161 °C
Optical Rotation	[α] _D ²⁰ = -7 to -9 ° (C=1 in CHCl ₃)
Assay by titration	≥ 90%
Purity by HPLC	≥ 95%
Storage	Store at < 0 °C

For Laboratory Use Only