

Chem-Impex International, Inc.

Tel: (630) 766-2112

E-mail: sales@chemimpex.com

Shipping and Correspondence:

935 Dillon Drive

Wood Dale, IL 60191

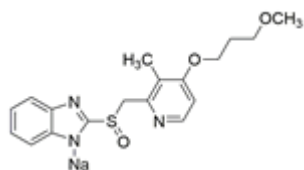
Fax: (630) 766-2218

Web site: www.chemimpex.com

Manufacturing site:

825 Dillon Drive

Wood Dale, IL 60191



Product Specifications

Catalogue Number	38225
Product	Rabeprazole sodium salt 2-([4-(3-Methoxypropoxy)-3-methylpyridin-2-yl]methylsulfinyl)-1H-Pariprazole
CAS Number	117976-90-6
Molecular Formula	C ₁₈ H ₂₀ N ₃ NaO ₃ S
Molecular Weight	381.43

Warnings	<i>Hygroscopic! Heat sensitive!</i>
Appearance	White to light yellow powder to crystal
Melting Point	149 - 151 °C
Purity by HPLC	≥ 98%
Storage	Store at < 0 °C

For Laboratory Use Only