

Chem-Impex International, Inc.

Tel: (630) 766-2112

E-mail: sales@chemimpex.com

Shipping and Correspondence:

935 Dillon Drive

Wood Dale, IL 60191

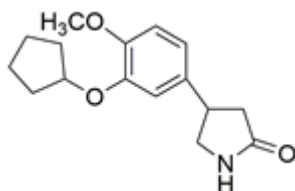
Fax: (630) 766-2218

Web site: www.chemimpex.com

Manufacturing site:

825 Dillon Drive

Wood Dale, IL 60191



Product Specifications

Catalogue Number	38222
Product	Rolipram 4-[3-(Cyclopentyloxy)-4-methoxyphenyl]-2-pyrrolidinone ZK 62711
CAS Number	61413-54-5
Molecular Formula	C ₁₆ H ₂₁ NO ₃
Molecular Weight	275.35

Warnings	<i>Heat sensitive!</i>
Appearance	White to orange to green powder to crystal
Melting Point	130 - 134 °C
Purity by HPLC	≥ 98%
Storage	Store at < -20 °C

For Laboratory Use Only