

Chem-Impex International, Inc.

Tel: (630) 766-2112

E-mail: sales@chemimpex.com

Shipping and Correspondence:

935 Dillon Drive

Wood Dale, IL 60191

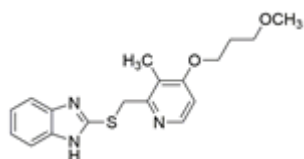
Fax: (630) 766-2218

Web site: www.chemimpex.com

Manufacturing site:

825 Dillon Drive

Wood Dale, IL 60191



Product Specifications

Catalogue Number	38216
Product	Rabeprazole sulfide 2-[[[4-(3-Methoxypropoxy)-3-methyl-2-pyridyl]methylthio]
CAS Number	117977-21-6
Molecular Formula	C ₁₈ H ₂₁ N ₃ O ₂ S
Molecular Weight	343.45

Warnings	<i>Air sensitive!</i>
Appearance	White to almost white powder to crystal
Melting Point	114 - 118 °C
Assay by titration	≥ 98%
Purity by HPLC	≥ 98%
Storage	Store at 2 - 8 °C

For Laboratory Use Only