

Chem-Impex International, Inc.

Tel: (630) 766-2112

E-mail: sales@chemimpex.com

Shipping and Correspondence:

935 Dillon Drive

Wood Dale, IL 60191

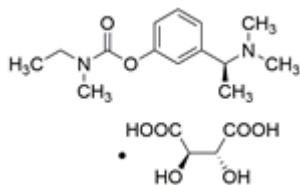
Fax: (630) 766-2218

Web site: www.chemimpex.com

Manufacturing site:

825 Dillon Drive

Wood Dale, IL 60191



Product Specifications

Catalogue Number	38214
Product	Rivastigmine L-tartrate 3-[(S)-1-(Dimethylamino)ethyl]phenyl N-Ethyl-N-methylcarbamate N-Ethyl-N-methylcarbamic acid 3-[(S)-1-(Dimethylamino)ethyl]
CAS Number	129101-54-8
Molecular Formula	C ₁₄ H ₂₂ N ₂ O ₂ •C ₄ H ₆ O ₆
Molecular Weight	400.43

Appearance	White to almost white powder to crystal
Melting Point	124 - 128 °C
Optical Rotation	[α] _D ²⁰ = 4 - 7 ° (C=5 in Methanol)
Assay by titration	≥ 98%
Purity by HPLC	≥ 98%
Storage	Store at 2 - 8 °C

For Laboratory Use Only