

# Chem-Impex International, Inc.

---

**Tel:** (630) 766-2112

**E-mail:** sales@chemimpex.com

**Shipping and Correspondence:**

935 Dillon Drive

Wood Dale, IL 60191

**Fax:** (630) 766-2218

**Web site:** www.chemimpex.com

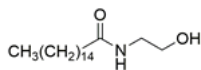
**Manufacturing site:**

825 Dillon Drive

Wood Dale, IL 60191

---

## Product Specifications



<b>Catalogue Number</b>	38206
<b>Product</b>	<b>Palmitoylethanolamide</b> Palmidrol <i>N</i> -(2-Hydroxyethyl)hexadecanamide
<b>CAS Number</b>	544-31-0
<b>Molecular Formula</b>	$\text{C}_{18}\text{H}_{37}\text{NO}_2$
<b>Molecular Weight</b>	299.5

---

<b>Warnings</b>	<i>Heat sensitive!</i>
<b>Appearance</b>	White to off-white crystalline powder
<b>Cation</b>	Lead (Pb) : $\leq 0.5$ mg/Kg Arsenic (As) : $\leq 0.15$ mg/Kg Cadmium (Cd) : $\leq 2.5$ mg/Kg Mercury (Hg) : $\leq 1.5$ mg/Kg
<b>Water Content (Karl Fisher)</b>	$\leq 1\%$
<b>Yeast and Mold</b>	$\leq 300$ cfu/g
<b>Loss on Drying</b>	$\leq 1\%$
<b>Residual Solvents</b>	Methanol : $\leq 0.3\%$ Ethanol : $\leq 0.5\%$ Ethyl acetate : $\leq 0.5\%$
<b>Coliform Organisms</b>	$\leq 10$ cfu/g
<b>E. Coli, Salmonella, S.Aureus</b>	Negative
<b>Microbial Count</b>	$\leq 10000$ cfu/g (TPC)
<b>Pseudomonas Aeruginosa</b>	Negative
<b>Residue On Ignition</b>	$\leq 0.10\%$
<b>Purity by HPLC</b>	$\geq 99.5\%$
<b>Storage</b>	Store at 2 - 8 °C

# *Product Specifications*

Catalog Number: 38206

---

**For Laboratory Use Only**