

Chem-Impex International, Inc.

Tel: (630) 766-2112

E-mail: sales@chemimpex.com

Shipping and Correspondence:

935 Dillon Drive

Wood Dale, IL 60191

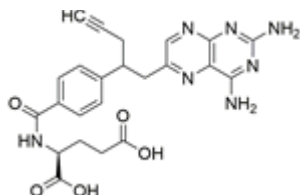
Fax: (630) 766-2218

Web site: www.chemimpex.com

Manufacturing site:

825 Dillon Drive

Wood Dale, IL 60191



Product Specifications

Catalogue Number	38204
Product	Pralatrexate (2S)-2-[4-[1-(2,4-Diaminopteridin-6-yl)pent-4-yn-2-yl]benzamido]
CAS Number	146464-95-1
Molecular Formula	C ₂₃ H ₂₃ N ₇ O ₅
Molecular Weight	477.48

Warnings	<i>Heat sensitive!</i>
Appearance	White to light yellow powder to crystal
Melting Point	215 °C (dec.)
Assay by titration	≥ 97%
Purity by HPLC	≥ 98%
Storage	Store at 2 - 8 °C

For Laboratory Use Only