

# Chem-Impex International, Inc.

---

**Tel:** (630) 766-2112

**E-mail:** sales@chemimpex.com

**Shipping and Correspondence:**

935 Dillon Drive

Wood Dale, IL 60191

**Fax:** (630) 766-2218

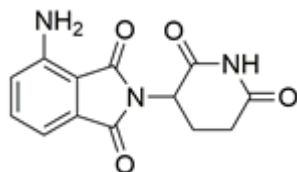
**Web site:** www.chemimpex.com

**Manufacturing site:**

825 Dillon Drive

Wood Dale, IL 60191

---



## Product Specifications

<b>Catalogue Number</b>	38182
<b>Product</b>	<b>Pomalidomide</b> 3-Amino- <i>N</i> -(2,6-dioxo-3-piperidyl)phthalimide 1,3-dioxo-2-(2,6-dioxopiperidin-3-yl)-4-aminoisindoline, 3-amino-
<b>CAS Number</b>	19171-19-8
<b>Molecular Formula</b>	C <sub>13</sub> H <sub>11</sub> N <sub>3</sub> O <sub>4</sub>
<b>Molecular Weight</b>	273.25

---

<b>Warnings</b>	<i>Heat sensitive!</i>
<b>Appearance</b>	White to yellow to green powder to crystalline
<b>Melting Point</b>	312 - 314 °C (dec.)
<b>Purity by HPLC</b>	≥ 98%
<b>Storage</b>	Store at 2 - 8 °C

**For Laboratory Use Only**