

# Chem-Impex International, Inc.

---

**Tel:** (630) 766-2112

**E-mail:** sales@chemimpex.com

**Shipping and Correspondence:**

935 Dillon Drive

Wood Dale, IL 60191

**Fax:** (630) 766-2218

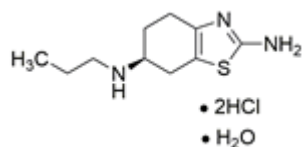
**Web site:** www.chemimpex.com

**Manufacturing site:**

825 Dillon Drive

Wood Dale, IL 60191

---



## Product Specifications

<b>Catalogue Number</b>	38181
<b>Product</b>	<b>Pramipexole dihydrochloride monohydrate</b> (S)-2-Amino-4,5,6,7-tetrahydro-6-(propylamino)benzothiazole PPX dihydrochloride monohydrate
<b>CAS Number</b>	191217-81-9
<b>Molecular Formula</b>	C <sub>10</sub> H <sub>17</sub> N <sub>3</sub> S•2HCl•H <sub>2</sub> O
<b>Molecular Weight</b>	302.26

---

<b>Appearance</b>	White to almost white powder to crystal
<b>Melting Point</b>	290 °C (dec.)
<b>Optical Rotation</b>	[α] <sub>D</sub> <sup>20</sup> = -65 to -71 ° (C=1 in MeOH)
<b>Purity by HPLC</b>	≥ 98%
<b>Storage</b>	Store at 2 - 8 °C

**For Laboratory Use Only**