

# Chem-Impex International, Inc.

---

**Tel:** (630) 766-2112

**E-mail:** sales@chemimpex.com

**Shipping and Correspondence:**

935 Dillon Drive

Wood Dale, IL 60191

**Fax:** (630) 766-2218

**Web site:** www.chemimpex.com

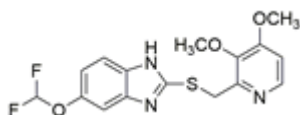
**Manufacturing site:**

825 Dillon Drive

Wood Dale, IL 60191

---

## Product Specifications



<b>Catalogue Number</b>	38180
<b>Product</b>	<b>Pantoprazole sulfide</b> 5-(Difluoromethoxy)-2-[[[(3,4-dimethoxy-2-pyridyl)methyl]thio]
<b>CAS Number</b>	102625-64-9
<b>Molecular Formula</b>	C <sub>16</sub> H <sub>15</sub> F <sub>2</sub> N <sub>3</sub> O <sub>3</sub> S
<b>Molecular Weight</b>	367.37

---

<b>Warnings</b>	<i>Heat sensitive!</i>
<b>Appearance</b>	White to almost white powder to crystal
<b>Melting Point</b>	116 - 120 °C
<b>Assay by titration</b>	≥ 98%
<b>Purity by HPLC</b>	≥ 98%
<b>Storage</b>	Store at 2 - 8 °C

**For Laboratory Use Only**