

Chem-Impex International, Inc.

Tel: (630) 766-2112

E-mail: sales@chemimpex.com

Shipping and Correspondence:

935 Dillon Drive

Wood Dale, IL 60191

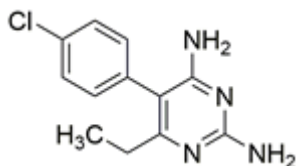
Fax: (630) 766-2218

Web site: www.chemimpex.com

Manufacturing site:

825 Dillon Drive

Wood Dale, IL 60191



Product Specifications

Catalogue Number	38173
Product	Pyrimethamine 5-(4-Chlorophenyl)-6-ethyl-2,4-pyrimidinediamine
CAS Number	58-14-0
Molecular Formula	C ₁₂ H ₁₃ ClN ₄
Molecular Weight	248.71

Appearance	White to almost white powder to crystal
Melting Point	239 - 243 °C
Assay by titration	≥ 98%
Purity by HPLC	≥ 98%
Storage	Store at 2 - 8 °C

For Laboratory Use Only