

# Chem-Impex International, Inc.

---

**Tel:** (630) 766-2112

**E-mail:** sales@chemimpex.com

**Shipping and Correspondence:**

935 Dillon Drive

Wood Dale, IL 60191

**Fax:** (630) 766-2218

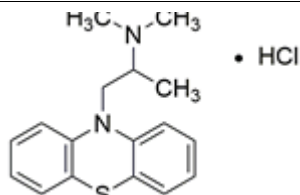
**Web site:** www.chemimpex.com

**Manufacturing site:**

825 Dillon Drive

Wood Dale, IL 60191

---



## Product Specifications

|                          |  |
|--------------------------|--|
| <b>Catalogue Number</b>  | 38172  |
| <b>Product</b>           | <b>Promethazine hydrochloride</b><br>10-[2-(Dimethylamino)propyl]phenothiazine hydrochloride |
| <b>CAS Number</b>        | 58-33-3  |
| <b>Molecular Formula</b> | C <sub>17</sub> H <sub>20</sub> N <sub>2</sub> S•HCl   |
| <b>Molecular Weight</b>  | 320.88   |

---

|                               |   |
|-------------------------------|---|
| <b>Appearance</b>             | White or almost white powder or particles   |
| <b>Appearance of Solution</b> | To pass test  |
| <b>Solubility</b>             | Very soluble in water, soluble in ethanol and chloroform, and almost insoluble in acetone or ether. |
| <b>Odor</b>                   | Almost odorless   |
| <b>pH</b>                     | 4 - 5   |
| <b>Loss on Drying</b>         | ≤ 0.5%  |
| <b>Residual Solvents</b>      | Acetone : ≤ 0.5%  |
| <b>Related Substances</b>     | ≤ 1%  |
| <b>Residue On Ignition</b>    | ≤ 0.1%  |
| <b>Assay</b>                  | ≥ 99% (On dried basis)  |
| <b>Storage</b>                | Store at 0 - 8 °C   |
| <b>Additional Information</b> | Deteriorate in the air for a long time, showing blue<br>Absorption factor : 883 - 937               |

**For Laboratory Use Only**