

Chem-Impex International, Inc.

Tel: (630) 766-2112

E-mail: sales@chemimpex.com

Shipping and Correspondence:

935 Dillon Drive

Wood Dale, IL 60191

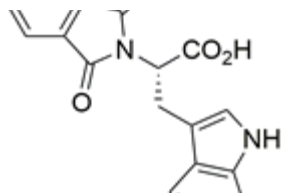
Fax: (630) 766-2218

Web site: www.chemimpex.com

Manufacturing site:

825 Dillon Drive

Wood Dale, IL 60191



Product Specifications

Catalogue Number	38171
Product	N-Phthalyl-L-tryptophan RG 108 DNA Methyltransferase inhibitor
CAS Number	48208-26-0
Molecular Formula	C ₁₉ H ₁₄ N ₂ O ₄
Molecular Weight	334.33

Warnings	<i>Heat sensitive!</i>
Appearance	Light yellow to amber to dark green powder to crystalline
Melting Point	180 - 182 °C
Optical Rotation	[α] _D ²⁰ = -268 to -273 ° (C=1 in EtOH)
Assay by titration	≥ 98%
Purity by HPLC	≥ 98%
Storage	Store at < 0 °C

For Laboratory Use Only