

Chem-Impex International, Inc.

Tel: (630) 766-2112

E-mail: sales@chemimpex.com

Shipping and Correspondence:

935 Dillon Drive

Wood Dale, IL 60191

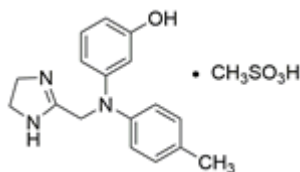
Fax: (630) 766-2218

Web site: www.chemimpex.com

Manufacturing site:

825 Dillon Drive

Wood Dale, IL 60191



Product Specifications

Catalogue Number	38168
Product	Phentolamine mesylate 2-[N-(m-Hydroxyphenyl)-p-toluidinomethyl]imidazoline Phentolamine methanesulfonate
CAS Number	65-28-1
Molecular Formula	C ₁₇ H ₁₉ N ₃ O•CH ₄ O ₃ S
Molecular Weight	377.46

Appearance	White to light yellow powder to crystal
Melting Point	178 - 182 °C
¹H NMR	Conforms to structure
Assay by titration	≥ 98%
Purity by HPLC	≥ 98%
Storage	Store at 2 - 8 °C

For Laboratory Use Only