

Chem-Impex International, Inc.

Tel: (630) 766-2112

E-mail: sales@chemimpex.com

Shipping and Correspondence:

935 Dillon Drive

Wood Dale, IL 60191

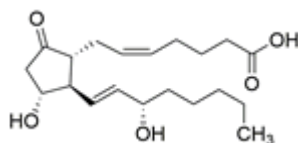
Fax: (630) 766-2218

Web site: www.chemimpex.com

Manufacturing site:

825 Dillon Drive

Wood Dale, IL 60191



Product Specifications

Catalogue Number	38159
Product	Prostaglandin E2 PGE2 Dinoprostone
CAS Number	363-24-6
Molecular Formula	C ₂₀ H ₃₂ O ₅
Molecular Weight	352.47

Appearance	White crystal powder
Optical Rotation	[α] _D ²⁰ = -82 to -90 °
Loss on Drying	≤ 1%
¹H NMR	Conforms to structure
Purity by HPLC	≥ 98%
Storage	Store at < -20 °C

For Laboratory Use Only