

Chem-Impex International, Inc.

Tel: (630) 766-2112

E-mail: sales@chemimpex.com

Shipping and Correspondence:

935 Dillon Drive

Wood Dale, IL 60191

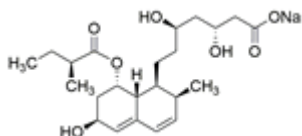
Fax: (630) 766-2218

Web site: www.chemimpex.com

Manufacturing site:

825 Dillon Drive

Wood Dale, IL 60191



Product Specifications

Catalogue Number	38156
Product	Pravastatin sodium (b <i>R</i> , d <i>R</i> ,1 <i>S</i> ,2 <i>S</i> ,6 <i>S</i> ,8 <i>S</i> ,8 <i>aR</i>)-1,2,6,7,8,8 <i>a</i> -Hexahydro-b, d,6-Eptastatin sodium salt
CAS Number	81131-70-6
Molecular Formula	C ₂₃ H ₃₅ NaO ₇
Molecular Weight	446.52

Warnings	<i>Heat sensitive!</i>
Appearance	White to almost white powder to crystal
Melting Point	172 - 174 °C
Optical Rotation	[α] _D ²⁰ = 153 - 159 ° (C=0.5 in Water) (calcd.on anh.substance)
Assay (anhydrous basis)	≥ 98%
Purity by HPLC	≥ 98%
Storage	Store at 2 - 8 °C

For Laboratory Use Only