

Chem-Impex International, Inc.

Tel: (630) 766-2112

E-mail: sales@chemimpex.com

Shipping and Correspondence:

935 Dillon Drive

Wood Dale, IL 60191

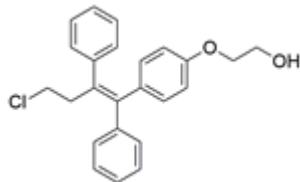
Fax: (630) 766-2218

Web site: www.chemimpex.com

Manufacturing site:

825 Dillon Drive

Wood Dale, IL 60191



Product Specifications

Catalogue Number	38143
Product	Ospemifene 2-[4-[(1Z)-4-Chloro-1,2-diphenyl-1-buten-1-yl]phenoxy]ethanol (Deaminohydroxy)toremifene
CAS Number	128607-22-7
Molecular Formula	C ₂₄ H ₂₃ ClO ₂
Molecular Weight	378.9

Warnings	<i>Heat sensitive!</i>
Appearance	White to almost white powder to crystal
Purity by GC	≥ 98%
Storage	Store at 2 - 8 °C

For Laboratory Use Only