

Chem-Impex International, Inc.

Tel: (630) 766-2112

E-mail: sales@chemimpex.com

Shipping and Correspondence:

935 Dillon Drive

Wood Dale, IL 60191

Fax: (630) 766-2218

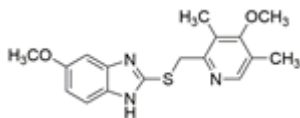
Web site: www.chemimpex.com

Manufacturing site:

825 Dillon Drive

Wood Dale, IL 60191

Product Specifications



Catalogue Number	38142
Product	Omeprazole sulfide 5-Methoxy-2-[[[(4-methoxy-3,5-dimethyl-2-pyridyl)methyl]thio]
CAS Number	73590-85-9
Molecular Formula	C ₁₇ H ₁₉ N ₃ O ₂ S
Molecular Weight	329.42

Appearance	White to almost white powder to crystal
Melting Point	122 - 126 °C
Assay by titration	≥ 98%
Purity by HPLC	≥ 98%
Storage	Store at 2 - 8 °C

For Laboratory Use Only