

Chem-Impex International, Inc.

Tel: (630) 766-2112

E-mail: sales@chemimpex.com

Shipping and Correspondence:

935 Dillon Drive

Wood Dale, IL 60191

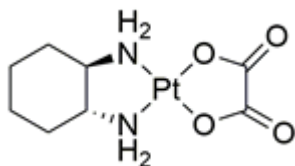
Fax: (630) 766-2218

Web site: www.chemimpex.com

Manufacturing site:

825 Dillon Drive

Wood Dale, IL 60191



Product Specifications

Catalogue Number	38132
Product	Oxaliplatin (<i>trans</i> -1,2-Cyclohexanediamine)oxalatoplatinum(II) [SP-4-2-(1 <i>R</i> - <i>trans</i>)]-(1,2-Cyclohexanediamine- <i>N,N'</i>)
CAS Number	61825-94-3
Molecular Formula	C ₈ H ₁₄ N ₂ O ₄ Pt
Molecular Weight	397.29

Warnings	<i>Heat sensitive!</i>
Appearance	White to almost white powder to crystal
Application	Store under inert gas
Storage	Store at 2 - 8 °C

For Laboratory Use Only