

Chem-Impex International, Inc.

Tel: (630) 766-2112

E-mail: sales@chemimpex.com

Shipping and Correspondence:

935 Dillon Drive

Wood Dale, IL 60191

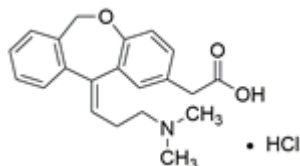
Fax: (630) 766-2218

Web site: www.chemimpex.com

Manufacturing site:

825 Dillon Drive

Wood Dale, IL 60191



Product Specifications

Catalogue Number	38130
Product	Olopatadine hydrochloride (11Z)-11-[3-(Dimethylamino)propylidene]-6,11-dihydrodibenz[b,e] Patanol hydrochloride
CAS Number	140462-76-6
Molecular Formula	C ₂₁ H ₂₃ NO ₃ •HCl
Molecular Weight	373.88

Appearance	White to light yellow powder to crystal
Melting Point	247 - 249 °C (dec.)
Assay by titration	98 - 102%
Purity by HPLC	≥ 98%
Storage	Store at 2 - 8 °C

For Laboratory Use Only