

Chem-Impex International, Inc.

Tel: (630) 766-2112

E-mail: sales@chemimpex.com

Shipping and Correspondence:

935 Dillon Drive

Wood Dale, IL 60191

Fax: (630) 766-2218

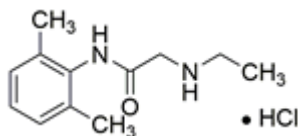
Web site: www.chemimpex.com

Manufacturing site:

825 Dillon Drive

Wood Dale, IL 60191

Product Specifications



Catalogue Number	38127
Product	Norlidocaine hydrochloride Monoethylglycinexylidide hydrochloride <i>N</i> -(2,6-Dimethylphenyl)-2-(ethylamino)acetamide hydrochloride
CAS Number	7729-94-4
Molecular Formula	C ₁₂ H ₁₈ N ₂ O•HCl
Molecular Weight	242.75

Appearance	White to almost white powder to crystal
Melting Point	291 - 293 °C
Assay by titration	≥ 98%
Purity by HPLC	≥ 98%
Storage	Store at 2 - 8 °C

For Laboratory Use Only