

Chem-Impex International, Inc.

Tel: (630) 766-2112

E-mail: sales@chemimpex.com

Shipping and Correspondence:

935 Dillon Drive

Wood Dale, IL 60191

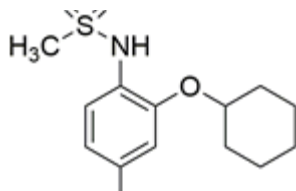
Fax: (630) 766-2218

Web site: www.chemimpex.com

Manufacturing site:

825 Dillon Drive

Wood Dale, IL 60191



Product Specifications

Catalogue Number	38123
Product	NS-398 <i>N</i> -[2-(Cyclohexyloxy)-4-nitrophenyl]methanesulfonamide
CAS Number	123653-11-2
Molecular Formula	C ₁₃ H ₁₈ N ₂ O ₅ S
Molecular Weight	314.36

Appearance	White to light yellow to light orange powder to crystal
Melting Point	137 - 141 °C
Purity by HPLC	≥ 98%
Storage	Store at 2 - 8 °C

For Laboratory Use Only