

Chem-Impex International, Inc.

Tel: (630) 766-2112

E-mail: sales@chemimpex.com

Shipping and Correspondence:

935 Dillon Drive

Wood Dale, IL 60191

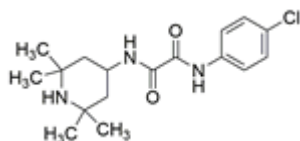
Fax: (630) 766-2218

Web site: www.chemimpex.com

Manufacturing site:

825 Dillon Drive

Wood Dale, IL 60191



Product Specifications

Catalogue Number	38119
Product	NBD-556 N1-(4-Chlorophenyl)-N2-(2,2,6,6-tetramethyl-4-piperidinyl) N1-(4-Chlorophenyl)-N2-(2,2,6,6-tetramethylpiperidin-4-yl)
CAS Number	333353-44-9
Molecular Formula	C ₁₇ H ₂₄ ClN ₃ O ₂
Molecular Weight	337.85

Warnings	<i>Heat sensitive!</i>
Appearance	White to light yellow to light orange powder to crystal
Purity by HPLC	≥ 98%
Storage	Store at 2 - 8 °C

For Laboratory Use Only