

# Chem-Impex International, Inc.

---

**Tel:** (630) 766-2112

**E-mail:** sales@chemimpex.com

**Shipping and Correspondence:**

935 Dillon Drive

Wood Dale, IL 60191

**Fax:** (630) 766-2218

**Web site:** www.chemimpex.com

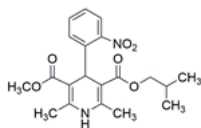
**Manufacturing site:**

825 Dillon Drive

Wood Dale, IL 60191

---

## Product Specifications



<b>Catalogue Number</b>	38101
<b>Product</b>	<b>Nisoldipine</b> 1,4-Dihydro-2,6-dimethyl-4-(2-nitrophenyl)-3,5-pyridinedicarboxylic Isobutyl methyl 1,4-dihydro-2,6-dimethyl-4-(2-nitrophenyl)-3,5-
<b>CAS Number</b>	63675-72-9
<b>Molecular Formula</b>	C <sub>20</sub> H <sub>24</sub> N <sub>2</sub> O <sub>6</sub>
<b>Molecular Weight</b>	388.42

---

<b>Appearance</b>	Yellow crystalline powder
<b>Odor</b>	Odorless
<b>Melting Point</b>	148 - 152 °C
<b>Heavy Metals</b>	≤ 0.001%
<b>Anion</b>	Sulfate : ≤ 0.1% Chlorides : ≤ 0.01%
<b>Infrared Spectrum</b>	Conforms to structure
<b>Loss on Drying</b>	≤ 0.5%
<b>Related Substances</b>	Maximum individual impurity : ≤ 0.5% Total impurity : ≤ 1%
<b>Residue On Ignition</b>	≤ 0.1%
<b>Assay</b>	≥ 99.5% (On dry basis)
<b>Storage</b>	Store at 2 - 8 °C
<b>Additional Information</b>	Taste : Tasteless

**For Laboratory Use Only**