

Chem-Impex International, Inc.

Tel: (630) 766-2112

E-mail: sales@chemimpex.com

Shipping and Correspondence:

935 Dillon Drive

Wood Dale, IL 60191

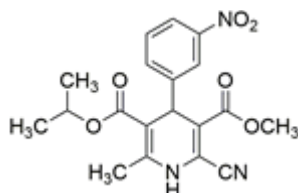
Fax: (630) 766-2218

Web site: www.chemimpex.com

Manufacturing site:

825 Dillon Drive

Wood Dale, IL 60191



Product Specifications

Catalogue Number	38100
Product	Nilvadipine 2-Cyano-1,4-dihydro-6-methyl-4-(3-nitrophenyl)-3,5- 5-isopropyl 3-methyl 2-cyano-1,4-dihydro-6-methyl-4-(3-
CAS Number	75530-68-6
Molecular Formula	C ₁₉ H ₁₉ N ₃ O ₆
Molecular Weight	385.38

Appearance	Light yellow to amber to dark green powder to crystal
Melting Point	149 - 153 °C
Purity by HPLC	≥ 98%
Storage	Store at 2 - 8 °C

For Laboratory Use Only