

Chem-Impex International, Inc.

Tel: (630) 766-2112

E-mail: sales@chemimpex.com

Shipping and Correspondence:

935 Dillon Drive

Wood Dale, IL 60191

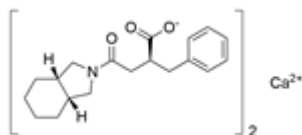
Fax: (630) 766-2218

Web site: www.chemimpex.com

Manufacturing site:

825 Dillon Drive

Wood Dale, IL 60191



Product Specifications

Catalogue Number	38087
Product	Mitiglinide calcium (α S,3 α R,7 α S)-Octahydro- Γ -oxo-a-(phenylmethyl)-2H-isoindole-2-Mitiglinide hemicalcium salt
CAS Number	145525-41-3
Molecular Formula	C ₃₈ H ₄₈ CaN ₂ O ₆
Molecular Weight	668.89

Warnings	<i>Moisture sensitive!</i>
Appearance	White to almost white powder to crystal
Melting Point	184 - 186 °C
Optical Rotation	$[\alpha]^{20}_{\text{D}} = 5 - 9^{\circ}$ (C=1, MeOH) (calcd.on anh.substance)
Assay by titration	$\geq 97\%$
Purity by HPLC	$\geq 98\%$
Application	Store under inert gas
Storage	Store at 2 - 8 °C

For Laboratory Use Only