

Chem-Impex International, Inc.

Tel: (630) 766-2112

E-mail: sales@chemimpex.com

Shipping and Correspondence:

935 Dillon Drive

Wood Dale, IL 60191

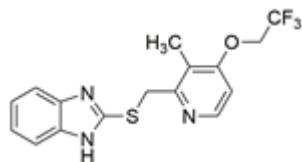
Fax: (630) 766-2218

Web site: www.chemimpex.com

Manufacturing site:

825 Dillon Drive

Wood Dale, IL 60191



Product Specifications

Catalogue Number	38077
Product	Lansoprazole sulfide 2-[3-Methyl-4-(2,2,2-trifluoroethoxy)-2-pyridylmethylthio]
CAS Number	103577-40-8
Molecular Formula	C ₁₆ H ₁₄ F ₃ N ₃ OS
Molecular Weight	353.36

Warnings	<i>Heat sensitive!</i>
Appearance	White to light yellow to light orange powder to crystal
Melting Point	147 - 151 °C
Assay by titration	≥ 98%
Purity by HPLC	≥ 98%
Storage	Store at < 0 °C

For Laboratory Use Only