

# Chem-Impex International, Inc.

---

**Tel:** (630) 766-2112

**E-mail:** sales@chemimpex.com

**Shipping and Correspondence:**

935 Dillon Drive

Wood Dale, IL 60191

**Fax:** (630) 766-2218

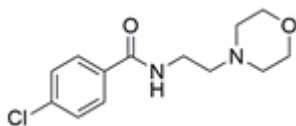
**Web site:** www.chemimpex.com

**Manufacturing site:**

825 Dillon Drive

Wood Dale, IL 60191

---



## Product Specifications

<b>Catalogue Number</b>	38072
<b>Product</b>	<b>Moclobemide</b> 4-Chloro- <i>N</i> -[2-(4-morpholinyl)ethyl]benzamide 4-Chloro- <i>N</i> -(2-morpholinoethyl)benzamide
<b>CAS Number</b>	71320-77-9
<b>Molecular Formula</b>	C <sub>13</sub> H <sub>17</sub> ClN <sub>2</sub> O <sub>2</sub>
<b>Molecular Weight</b>	268.74

---

<b>Appearance</b>	White to almost white powder to crystal
<b>Melting Point</b>	136 - 140 °C
<b>Purity by HPLC</b>	≥ 98%
<b>Storage</b>	Store at 2 - 8 °C

**For Laboratory Use Only**