

# Chem-Impex International, Inc.

---

**Tel:** (630) 766-2112

**E-mail:** sales@chemimpex.com

**Shipping and Correspondence:**

935 Dillon Drive

Wood Dale, IL 60191

**Fax:** (630) 766-2218

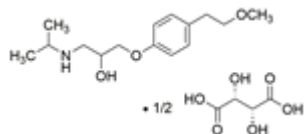
**Web site:** www.chemimpex.com

**Manufacturing site:**

825 Dillon Drive

Wood Dale, IL 60191

---



## Product Specifications

|                          |   |
|--------------------------|---|
| <b>Catalogue Number</b>  | 38062   |
| <b>Product</b>           | <b>Metoprolol tartrate</b><br>1-(isopropylamino)-3-[4-(β-methoxyethyl)phenoxy]-2-propanol (+)-<br>Lopressor   |
| <b>CAS Number</b>        | 56392-17-7  |
| <b>Molecular Formula</b> | (C <sub>15</sub> H <sub>25</sub> NO <sub>3</sub> ) <sub>2</sub> •C <sub>4</sub> H <sub>6</sub> O <sub>6</sub> |
| <b>Molecular Weight</b>  | 684.81  |

---

|                               |   |
|-------------------------------|---|
| <b>Appearance</b>             | White crystalline powder  |
| <b>pH</b>                     | 6 - 7   |
| <b>Optical Rotation</b>       | [α] <sub>D</sub> <sup>20</sup> = +6.5 to +10.5 ° (C=2 in water)   |
| <b>Loss on Drying</b>         | ≤ 0.5%  |
| <b>Related Substances</b>     | Metoprolol related compound A : ≤ 0.10%<br>Metoprolol related compound B : ≤ 0.10%<br>Metoprolol related compound C : ≤ 0.10%<br>Metoprolol related compound D : ≤ 0.10%<br>Any individual unspecified impurity : ≤ 0.10%<br>Total impurities : ≤ 0.50% |
| <b>Residue On Ignition</b>    | ≤ 0.1%  |
| <b>Assay</b>                  | 98 - 102%   |
| <b>Grade</b>                  | meets USP specification   |
| <b>Storage</b>                | Store at 2 - 8 °C   |
| <b>Additional Information</b> | Identification A : Infrared Spectrum : Conforms to structure<br>Identification B : The retention time of the major peak of the sample solution corresponds to that of the standard solution, as obtained in the Assay.                                  |

**For Laboratory Use Only**