

Chem-Impex International, Inc.

Tel: (630) 766-2112

E-mail: sales@chemimpex.com

Shipping and Correspondence:

935 Dillon Drive

Wood Dale, IL 60191

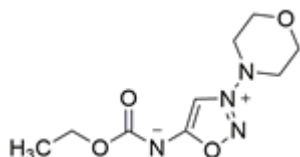
Fax: (630) 766-2218

Web site: www.chemimpex.com

Manufacturing site:

825 Dillon Drive

Wood Dale, IL 60191



Product Specifications

Catalogue Number	38059
Product	Molsidomine <i>N</i> -(Ethoxycarbonyl)-3-(4-morpholino)sydnone imine
CAS Number	25717-80-0
Molecular Formula	C ₉ H ₁₄ N ₄ O ₄
Molecular Weight	242.24

Warnings	<i>Heat sensitive!</i>
Appearance	White to almost white powder to crystal
Melting Point	139 - 143 °C
¹³C NMR	Conforms to structure
¹H NMR	Conforms to structure
Assay by titration	≥ 98%
Purity by HPLC	≥ 98%
Storage	Store at 2 - 8 °C

For Laboratory Use Only