

Chem-Impex International, Inc.

Tel: (630) 766-2112

E-mail: sales@chemimpex.com

Shipping and Correspondence:

935 Dillon Drive

Wood Dale, IL 60191

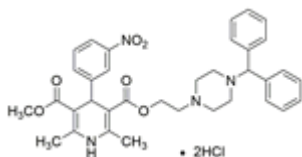
Fax: (630) 766-2218

Web site: www.chemimpex.com

Manufacturing site:

825 Dillon Drive

Wood Dale, IL 60191



Product Specifications

Catalogue Number 38047

Product

Manidipine dihydrochloride

1,4-Dihydro-2,6-dimethyl-4-(3-nitrophenyl)-3,5-pyridinedicarboxylic
2-[4-(Diphenylmethyl)-1-piperazinyl]ethyl methyl 1,4-dihydro-2,6-
89226-75-5

CAS Number

Molecular Formula

C₃₅H₃₈N₄O₆•2HCl

Molecular Weight

683.63

Appearance

Yellow or light yellow crystalline

Solubility

Freely soluble in dimethylsulfoxide, sparingly soluble in
methanol, slightly soluble in ethanol(99.5%) and practically
insoluble in water.

Melting Point

~207 °C (dec.)

Heavy Metals

≤ 0.001%

Cation

Arsenic (As) : ≤ 0.0001%

Infrared Spectrum

Conforms to structure

UV Ratios

Max. absorption is in the wavelength 228 ± 1 nm

Loss on Drying

≤ 1.5%

Residual Solvents

Methyl alcohol : ≤ 0.3%
Triethylamine : ≤ 0.5%
Methylbenzene : ≤ 0.089%

Related Substances

Max. individual impurity : ≤ 0.2%
Total impurity : ≤ 0.7%

Residue On Ignition

≤ 0.2%

Assay

98 - 101%

Storage

Store at 2 - 8 °C

Additional Information

Test for chloride : To pass test

Product Specifications

Catalog Number: 38047

For Laboratory Use Only