

Chem-Impex International, Inc.

Tel: (630) 766-2112

E-mail: sales@chemimpex.com

Shipping and Correspondence:

935 Dillon Drive

Wood Dale, IL 60191

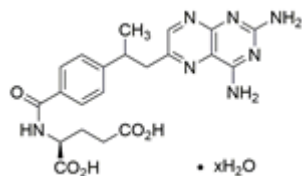
Fax: (630) 766-2218

Web site: www.chemimpex.com

Manufacturing site:

825 Dillon Drive

Wood Dale, IL 60191



Product Specifications

Catalogue Number	38037
Product	Methotrexate hydrate (+)-Amethopterin hydrate 4-Amino-10-methylfolic acid hydrate
CAS Number	133073-73-1
Molecular Formula	C ₂₀ H ₂₂ N ₈ O ₅ •xH ₂ O
Molecular Weight	454.45

Appearance	Light yellow to brown powder to crystal
Water Content (Karl Fisher)	≤ 10%
Optical Rotation	[α] _D ²⁰ = 18 - 23 ° (C=0.1 in 1mol/L NaOH sol.)(calcd.on anh.substance)
Assay by titration	≥ 98%
Purity by HPLC	≥ 98%
Storage	Store at 2 - 8 °C

For Laboratory Use Only