

Chem-Impex International, Inc.

Tel: (630) 766-2112

E-mail: sales@chemimpex.com

Shipping and Correspondence:

935 Dillon Drive

Wood Dale, IL 60191

Fax: (630) 766-2218

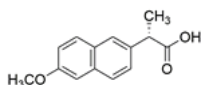
Web site: www.chemimpex.com

Manufacturing site:

825 Dillon Drive

Wood Dale, IL 60191

Product Specifications



Catalogue Number	38030
Product	(S)-(+)-2-(6-Methoxy-2-naphthyl)propionic (S)-(+)-6-Methoxy- α -methyl-2-naphthaleneacetic acid Naproxen
CAS Number	22204-53-1
Molecular Formula	C ₁₄ H ₁₄ O ₃
Molecular Weight	230.26

Warnings	<i>Light sensitive!</i>
Appearance	White to almost white powder to crystal
Optical Rotation	$[\alpha]_D^{20} = 83.0 - 89.5^\circ$
Loss on Drying	$\leq 0.5\%$ (105 °C, 3h)
Assay	98.5 - 101.5%
Grade	USP
Storage	Store at 2 - 8 °C
Additional Information	Identification : IR : Conforms to structure UV : To pass test

For Laboratory Use Only