

Chem-Impex International, Inc.

Tel: (630) 766-2112

E-mail: sales@chemimpex.com

Shipping and Correspondence:

935 Dillon Drive

Wood Dale, IL 60191

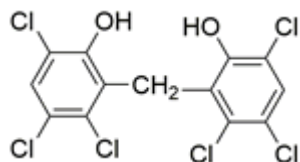
Fax: (630) 766-2218

Web site: www.chemimpex.com

Manufacturing site:

825 Dillon Drive

Wood Dale, IL 60191



Product Specifications

Catalogue Number	38027
Product	Hexachlorophene 3,3',5,5',6,6'-Hexachloro-2,2'-dihydroxydiphenylmethane 2,2'-Methylenebis(3,4,6-trichlorophenol)
CAS Number	70-30-4
Molecular Formula	C ₁₃ H ₆ Cl ₆ O ₂
Molecular Weight	406.89

Appearance	White to light yellow to light orange powder to crystal
Melting Point	162 - 167 °C
¹H NMR	Conforms to structure
Assay by titration	≥ 98%
Storage	Store at 2 - 8 °C

For Laboratory Use Only