

Chem-Impex International, Inc.

Tel: (630) 766-2112

E-mail: sales@chemimpex.com

Shipping and Correspondence:

935 Dillon Drive

Wood Dale, IL 60191

Fax: (630) 766-2218

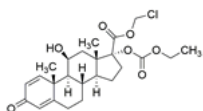
Web site: www.chemimpex.com

Manufacturing site:

825 Dillon Drive

Wood Dale, IL 60191

Product Specifications



Catalogue Number	38021
Product	Loteprednol etabonate (11b,17a)-17-[(Ethoxycarbonyl)oxy]-11-hydroxy-3-oxo-HGP 1
CAS Number	82034-46-6
Molecular Formula	C ₂₄ H ₃₁ ClO ₇
Molecular Weight	466.96

Warnings	<i>Heat sensitive!</i>
Appearance	White or off-white powder
Solubility	Freely soluble in chloroform, insoluble in water, sparingly soluble in acetone, slightly soluble in methanol.
Heavy Metals	≤ 0.001%
Anion	Chloride (Cl) : ≤ 0.01% Sulfate (SO ₄) : ≤ 0.05%
Infrared Spectrum	Conforms to structure
UV Ratios	Max. Absorption is in the wavelength 245 ± 1 nm
Loss on Drying	≤ 0.5%
Residual Solvents	Methanol : ≤ 0.3% Acetone : ≤ 0.5%
Related Substances	Impurity : ≤ 0.2% Total impurity : ≤ 0.5%
Residue On Ignition	≤ 0.1%
Assay	98 - 102% (On dried basis)
Storage	Store at < 0 °C

For Laboratory Use Only