

# Chem-Impex International, Inc.

---

**Tel:** (630) 766-2112

**E-mail:** sales@chemimpex.com

**Shipping and Correspondence:**

935 Dillon Drive

Wood Dale, IL 60191

**Fax:** (630) 766-2218

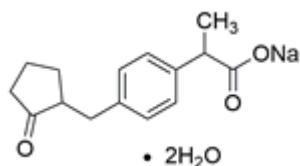
**Web site:** www.chemimpex.com

**Manufacturing site:**

825 Dillon Drive

Wood Dale, IL 60191

---



## Product Specifications

|                          |  |
|--------------------------|--|
| <b>Catalogue Number</b>  | 38006  |
| <b>Product</b>           | <b>Loxoprofen sodium salt dihydrate</b><br>Sodium 2-[4-[(2-Oxocyclopentyl)methyl]phenyl]propionate dihydrate<br>2-[4-[(2-Oxocyclopentyl)methyl]phenyl]propionic acid sodium salt |
| <b>CAS Number</b>        | 226721-96-6  |
| <b>Molecular Formula</b> | C <sub>15</sub> H <sub>17</sub> NaO <sub>3</sub> •2H <sub>2</sub> O  |
| <b>Molecular Weight</b>  | 304.32   |

---

|                                |   |
|--------------------------------|---|
| <b>Appearance</b>              | White to almost white powder to crystal |
| <b>Melting Point</b>           | 197 - 199 °C (dec.)                     |
| <b>Assay (anhydrous basis)</b> | ≥ 98%                                   |
| <b>Purity by HPLC</b>          | ≥ 98%                                   |
| <b>Storage</b>                 | Store at 2 - 8 °C                       |

**For Laboratory Use Only**