

Chem-Impex International, Inc.

Tel: (630) 766-2112

E-mail: sales@chemimpex.com

Shipping and Correspondence:

935 Dillon Drive

Wood Dale, IL 60191

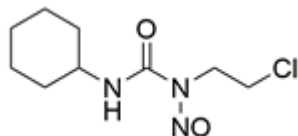
Fax: (630) 766-2218

Web site: www.chemimpex.com

Manufacturing site:

825 Dillon Drive

Wood Dale, IL 60191



Product Specifications

Catalogue Number	38005
Product	Lomustine 1-(2-Chloroethyl)-3-cyclohexyl-1-nitrosourea
CAS Number	13010-47-4
Molecular Formula	C ₉ H ₁₆ ClN ₃ O ₂
Molecular Weight	233.7

Warnings	<i>Heat sensitive!</i>
Appearance	Light orange to yellow to green powder to crystal
Melting Point	89 - 93 °C
Purity by HPLC	≥ 98%
Storage	Store at < 0 °C

For Laboratory Use Only