

Chem-Impex International, Inc.

Tel: (630) 766-2112

E-mail: sales@chemimpex.com

Shipping and Correspondence:

935 Dillon Drive

Wood Dale, IL 60191

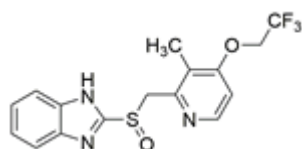
Fax: (630) 766-2218

Web site: www.chemimpex.com

Manufacturing site:

825 Dillon Drive

Wood Dale, IL 60191



Product Specifications

Catalogue Number	37995
Product	Lansoprazole 2-[[[3-Methyl-4-(2,2,2-trifluoroethoxy)-2-pyridyl]methyl]sulfinyl]benzimidazole
CAS Number	103577-45-3
Molecular Formula	C ₁₆ H ₁₄ F ₃ N ₃ O ₂ S
Molecular Weight	369.36

Warnings	<i>Heat sensitive!</i>
Appearance	White to brownish-white powder
Solubility	Freely soluble in dimethyl formamide. Practically insoluble in water.
Melting Point	~ 166 °C (dec.)
Water Content (Karl Fisher)	≤ 0.10%
Infrared Spectrum	Conforms to reference.
Related Substances	Lansoprazole sulphone: ≤ 0.40% Lansoprazole N-Oxide: ≤ 0.10% Lansoprazole sulphide: ≤ 0.10% Any other secondary impurity: 0.10% Total impurities: ≤ 0.60%
Residue On Ignition	≤ 0.10%
Assay	98.0 - 102.0%
Grade	Meets USP specifications
Storage	Store at 2 - 8 °C
Additional Information	Identification by UV-Visible spectrascopy: Conforms to reference.

For Laboratory Use Only