

Chem-Impex International, Inc.

Tel: (630) 766-2112

E-mail: sales@chemimpex.com

Shipping and Correspondence:

935 Dillon Drive

Wood Dale, IL 60191

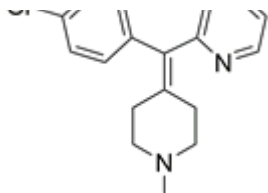
Fax: (630) 766-2218

Web site: www.chemimpex.com

Manufacturing site:

825 Dillon Drive

Wood Dale, IL 60191



Product Specifications

Catalogue Number	37992
Product	Loratadine
CAS Number	4-(8-Chloro-5,6-dihydro-11 <i>H</i> -benzo[5,6]cyclohepta[1,2-b] 79794-75-5
Molecular Formula	C ₂₂ H ₂₃ ClN ₂ O ₂
Molecular Weight	382.89
Appearance	White to off-white powder
Solubility	Freely soluble in acetone, chloroform, methanol, toluene, insoluble in water
Infrared Spectrum	Conforms to structure
Loss on Drying	≤ 0.5%
Residual Solvents	Di-isopropyl ether : ≤ 500 ppm Tetrahydrofuran : ≤ 500 ppm Triethylamine : ≤ 50 ppm Toluene : ≤ 500 ppm
Related Substances	Related compound A, B, C : ≤ 0.10% Hydroxy deacyl analog : ≤ 0.10% , Hydroxy loratadine : ≤ 0.10% Dehydro loratadine isomer - B : ≤ 0.10% , Iso loratadine - A : ≤ 0.10% Any individual unknown impurity : ≤ 0.10% , Total impurities : ≤ 0.30%
Residue On Ignition	≤ 0.1%
Purity by HPLC	98.5 - 101.0%
Grade	Meets USP specifications
Storage	Store at 2 - 8 °C

For Laboratory Use Only