

Chem-Impex International, Inc.

Tel: (630) 766-2112

E-mail: sales@chemimpex.com

Shipping and Correspondence:

935 Dillon Drive

Wood Dale, IL 60191

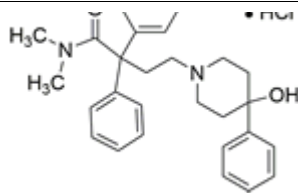
Fax: (630) 766-2218

Web site: www.chemimpex.com

Manufacturing site:

825 Dillon Drive

Wood Dale, IL 60191



Product Specifications

Catalogue Number	37987
Product	Loperamide hydrochloride 4-(p-Chlorophenyl)-4-hydroxy-N,N-dimethyl- α,α -diphenyl-1-
CAS Number	34552-83-5
Molecular Formula	C ₂₉ H ₃₃ ClN ₂ O ₂ •HCl
Molecular Weight	513.5

Appearance	White or almost white powder
Solubility	Slightly soluble in water, freely soluble in 96% Ethanol and methanol.
Infrared Spectrum	Conforms to structure
Loss on Drying	≤ 0.5%
Related Substances	Impurity A, B, C, D : ≤ 0.2% Impurity E, F, G, H : ≤ 0.2% Any other impurity : ≤ 0.1% Total impurities : ≤ 0.3%
Sulfated Ash	≤ 0.1%
Assay by titration	99 - 101% (By Potentiometer)
Storage	Store at 2 - 8 °C

For Laboratory Use Only