

Chem-Impex International, Inc.

Tel: (630) 766-2112

E-mail: sales@chemimpex.com

Shipping and Correspondence:

935 Dillon Drive

Wood Dale, IL 60191

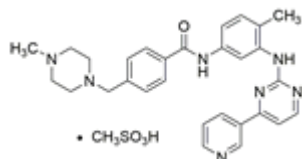
Fax: (630) 766-2218

Web site: www.chemimpex.com

Manufacturing site:

825 Dillon Drive

Wood Dale, IL 60191



Product Specifications

Catalogue Number	37970
Product	Imatinib mesylate Imatinib methanesulfonate
CAS Number	220127-57-1
Molecular Formula	C ₂₉ H ₃₁ N ₇ O•CH ₄ O ₃ S
Molecular Weight	589.72

Appearance	White to light yellow powder to crystal
Purity by HPLC	≥ 98%
Storage	Store at 2 - 8 °C

For Laboratory Use Only