

Chem-Impex International, Inc.

Tel: (630) 766-2112

E-mail: sales@chemimpex.com

Shipping and Correspondence:

935 Dillon Drive

Wood Dale, IL 60191

Fax: (630) 766-2218

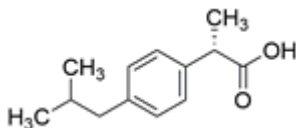
Web site: www.chemimpex.com

Manufacturing site:

825 Dillon Drive

Wood Dale, IL 60191

Product Specifications



Catalogue Number	37951
Product	(S)-(+)-Ibuprofen (S)-(+)-2-(4-Isobutylphenyl)propionic acid (S)-(+)-4-Isobutyl-a-methylphenylacetic acid
CAS Number	51146-56-6
Molecular Formula	C ₁₃ H ₁₈ O ₂
Molecular Weight	206.29

Appearance	White to almost white powder to crystal
Melting Point	51 - 55 °C
Optical Rotation	[α] ²⁰ _D = 58 - 60 ° (C=2, EtOH)
¹H NMR	Conforms to structure
Assay by titration	≥ 98%
Purity by GC	≥ 98%
Storage	Store at 2 - 8 °C

For Laboratory Use Only