

Chem-Impex International, Inc.

Tel: (630) 766-2112

E-mail: sales@chemimpex.com

Shipping and Correspondence:

935 Dillon Drive

Wood Dale, IL 60191

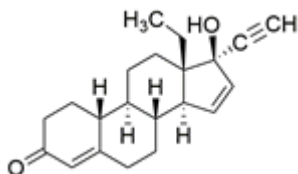
Fax: (630) 766-2218

Web site: www.chemimpex.com

Manufacturing site:

825 Dillon Drive

Wood Dale, IL 60191



Product Specifications

Catalogue Number	37914
Product	Gestodene 13 β -Ethyl-17 β -hydroxy-18,19-dinorpregna-4,15-dien-20-yn-3-one
CAS Number	60282-87-3
Molecular Formula	C ₂₁ H ₂₆ O ₂
Molecular Weight	310.44

Warnings	<i>Heat sensitive!</i>
Appearance	White to almost white powder to crystal
Melting Point	197 - 201 °C
Optical Rotation	[α] ²⁰ _D = -179 to -185 ° (C=0.5, CHCl ₃)
Purity by HPLC	≥ 98%
Storage	Store at < 0 °C

For Laboratory Use Only