

Chem-Impex International, Inc.

Tel: (630) 766-2112

E-mail: sales@chemimpex.com

Shipping and Correspondence:

935 Dillon Drive

Wood Dale, IL 60191

Fax: (630) 766-2218

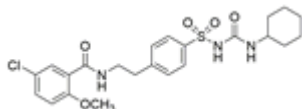
Web site: www.chemimpex.com

Manufacturing site:

825 Dillon Drive

Wood Dale, IL 60191

Product Specifications



Catalogue Number	37910
Product	Glibenclamide 5-Chloro-N-[4-(3-cyclohexylureidosulfonyl)phenethyl]-2-Glyburide
CAS Number	10238-21-8
Molecular Formula	C ₂₃ H ₂₈ ClN ₃ O ₅ S
Molecular Weight	494

Warnings	<i>Heat sensitive!</i>
Appearance	White to almost white powder to crystal
Melting Point	172 - 176 °C
¹H NMR	Conforms to structure
Assay by titration	≥ 98.5 %
Purity by HPLC	≥ 98.5 %
Storage	Store at 2 - 8 °C

For Laboratory Use Only