

Chem-Impex International, Inc.

Tel: (630) 766-2112

E-mail: sales@chemimpex.com

Shipping and Correspondence:

935 Dillon Drive

Wood Dale, IL 60191

Fax: (630) 766-2218

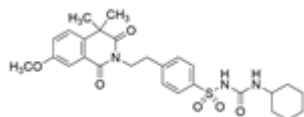
Web site: www.chemimpex.com

Manufacturing site:

825 Dillon Drive

Wood Dale, IL 60191

Product Specifications



Catalogue Number	37905
Product	Gliquidone 2-{2-[4-({[(cyclohexylamino)carbonyl]amino }sulfonyl)phenyl]
CAS Number	33342-05-1
Molecular Formula	C ₂₇ H ₃₃ N ₃ O ₆ S
Molecular Weight	527.64

Appearance	White to almost white powder to crystal
Melting Point	177.0 - 188.3 °C
Assay by titration	≥ 98%
Purity by HPLC	≥ 98%
Storage	Store at 2 - 8 °C

For Laboratory Use Only