

# Chem-Impex International, Inc.

---

**Tel:** (630) 766-2112

**E-mail:** sales@chemimpex.com

**Shipping and Correspondence:**

935 Dillon Drive

Wood Dale, IL 60191

**Fax:** (630) 766-2218

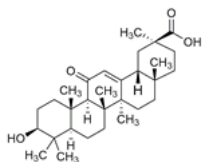
**Web site:** www.chemimpex.com

**Manufacturing site:**

825 Dillon Drive

Wood Dale, IL 60191

---



## Product Specifications

<b>Catalogue Number</b>	37904
<b>Product</b>	<b>Glycyrrhetic acid</b>
<b>CAS Number</b>	471-53-4
<b>Molecular Formula</b>	C <sub>30</sub> H <sub>46</sub> O <sub>4</sub>
<b>Molecular Weight</b>	470.69

---

<b>Appearance</b>	White powder
<b>Solubility</b>	Soluble in methanol
<b>Heavy Metals</b>	≤ 10 ppm
<b>Cation</b>	Lead : ≤ 2 ppm Arsenic : ≤ 1 ppm Mercury : ≤ 0.1 ppm Cadmium : ≤ 1 ppm
<b>Optical Rotation</b>	[α] <sup>20</sup> <sub>D</sub> = 148 - 156 ° (C=1 in MeOH)
<b>Loss on Drying</b>	≤ 5%
<b>Residual Solvents</b>	≤ 5000 ppm
<b>Ash</b>	≤ 0.5%
<b>Purity by HPLC</b>	≥ 99%
<b>Storage</b>	Store at 2 - 8 °C

**For Laboratory Use Only**