

# Chem-Impex International, Inc.

---

**Tel:** (630) 766-2112

**E-mail:** sales@chemimpex.com

**Shipping and Correspondence:**

935 Dillon Drive

Wood Dale, IL 60191

**Fax:** (630) 766-2218

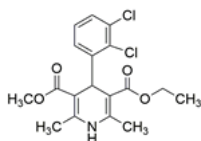
**Web site:** www.chemimpex.com

**Manufacturing site:**

825 Dillon Drive

Wood Dale, IL 60191

---



## Product Specifications

<b>Catalogue Number</b>	37883
<b>Product</b>	<b>Felodipine</b> 4-(2,3-Dichlorophenyl)-1,4-dihydro-2,6-dimethyl-3,5-Ethyl methyl 4-(2,3-Dichlorophenyl)-1,4-dihydro-2,6-dimethyl-3,5-
<b>CAS Number</b>	72509-76-3
<b>Molecular Formula</b>	C <sub>18</sub> H <sub>19</sub> Cl <sub>2</sub> NO <sub>4</sub>
<b>Molecular Weight</b>	384.25

---

<b>Appearance</b>	White to pale yellow crystalline powder
<b>Loss on Drying</b>	≤ 0.5%
<b>Related Substances</b>	Individual impurity : ≤ 1% Total impurities : ≤ 1.5%
<b>Residue On Ignition</b>	≤ 0.1%
<b>Assay</b>	98 - 101% (On dried basis)
<b>Grade</b>	USP
<b>Storage</b>	Store at RT
<b>Additional Information</b>	Identification A, B : To pass test

**For Laboratory Use Only**