

Chem-Impex International, Inc.

Tel: (630) 766-2112

E-mail: sales@chemimpex.com

Shipping and Correspondence:

935 Dillon Drive

Wood Dale, IL 60191

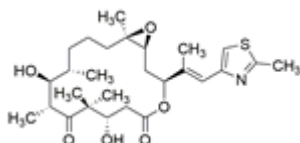
Fax: (630) 766-2218

Web site: www.chemimpex.com

Manufacturing site:

825 Dillon Drive

Wood Dale, IL 60191



Product Specifications

Catalogue Number	37869
Product	Epothilone B
CAS Number	152044-54-7
Molecular Formula	C ₂₇ H ₄₁ NO ₆ S
Molecular Weight	507.69

Appearance	White to almost white powder to crystal
Melting Point	94 °C
Optical Rotation	[α] ²⁰ _D = -40 to -44 ° (C=0.2 in MeOH)
Purity by HPLC	≥ 95%
Storage	Store at < -20 °C

For Laboratory Use Only