

Chem-Impex International, Inc.

Tel: (630) 766-2112

E-mail: sales@chemimpex.com

Shipping and Correspondence:

935 Dillon Drive

Wood Dale, IL 60191

Fax: (630) 766-2218

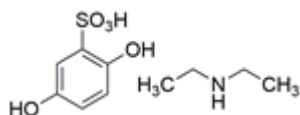
Web site: www.chemimpex.com

Manufacturing site:

825 Dillon Drive

Wood Dale, IL 60191

Product Specifications



Catalogue Number	37859
Product	Etamsylate Diethylamine 2,5-Dihydroxybenzenesulfonate
CAS Number	2624-44-4
Molecular Formula	C ₁₀ H ₁₇ NO ₅ S
Molecular Weight	263.31

Appearance	White to almost white powder to crystal
Melting Point	128 - 132 °C
Assay by titration	≥ 98%
Purity by HPLC	≥ 98%
Storage	Store at 2 - 8 °C

For Laboratory Use Only